

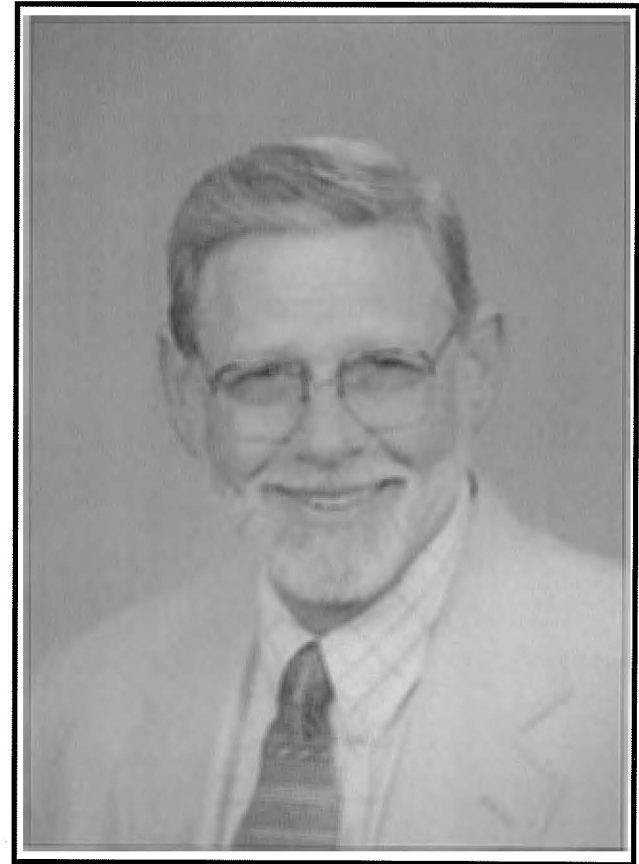
Charles H. Lyles Award  
Recipient  
1997

Gulf States Marine Fisheries Commission  
Past Charles H. Lyles Award Recipients

---

<i>Charles H. Lyles</i>	<i>1984</i>
<i>Theodore B. Ford</i>	<i>1985</i>
<i>J.Y. Christmas</i>	<i>1986</i>
<i>John Breaux</i>	<i>1987</i>
<i>John Ray Nelson</i>	<i>1988</i>
<i>I.B. "Buck" Byrd</i>	<i>1989</i>
<i>Hugh A. Swingle</i>	<i>1990</i>
<i>John A. Mehos</i>	<i>1991</i>
<i>J. Burton Angelle</i>	<i>1992</i>
<i>Louis A. Villanova</i>	<i>1993</i>
<i>Theodore H. Shepard</i>	<i>1994</i>
<i>Edwin A. Joyce, Jr.</i>	<i>1995</i>
<i>Tommy D. Candies</i>	<i>1996</i>

---



*Walter M. Tatum*

# Walter M. Tatum

Married to the former Greta Weeks; they have three children; Troy, Scott, and Kim, and eight grandchildren

Graduated from Auburn University in 1961 with a degree in Fisheries Management

Retired January 1, 1997. Walter loves to play golf, fish, read, birdwatch, and watch Auburn football. War Eagle!

## Work History

Auburn University Fisheries Department  
U.S. Navy  
Florida Game and Freshwater Fish Commission  
U.S. Fish and Wildlife Service  
Alabama Department of Conservation, Game and Fish Division  
Deep South Fisheries  
Alabama Department of Conservation, Marine Resources Division

Began working for the Marine Resources Division in 1971; served as chief Marine Biologist for the Division from May 1977- January 1997

## Professional Affiliations and Achievements

Authored and co-authored over seventy articles regarding fisheries-related topics

Served on numerous local, county, state, national, and international committees dealing with fisheries and aquaculture  
Served as referee or on the editorial board for:

Southern Division of American Fisheries Society  
World Mariculture Society  
Northeast Gulf Science  
American Fisheries Society

### *Committee Memberships:*

Gulf States Marine Fisheries Commission	Proxy member
TCC SEAMAP Subcommittee	Chairman (1982-1996)
Recreational Advisory Committee	Chairman
Artificial Reef Subcommittee	Chairman
Technical Coordinating Committee	Member
MARFIN Committee	Member
MARFIN Development Committees	Member